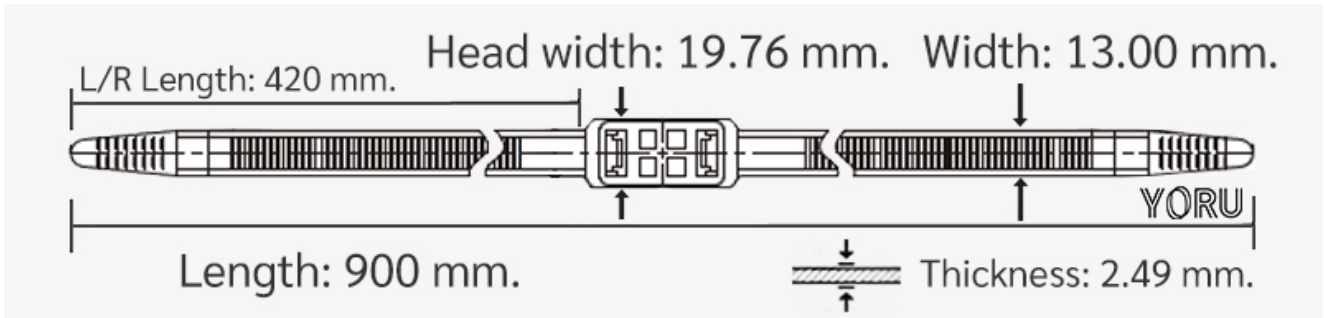


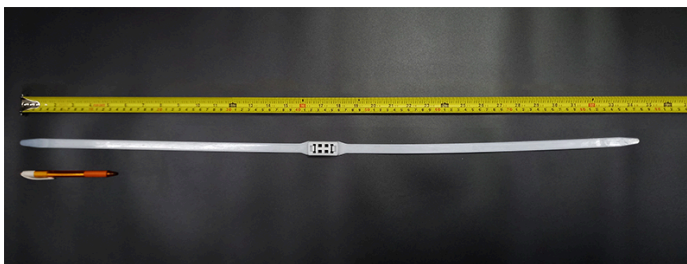
YORU Cable Ties Datasheet



Model YR900-13HCW
 Size Label 36" x 13.00 mm.



Color	White
Type	Handcuffs
Material	Polyamide 6.6 High impact (Nylon 6.6 or PA66)
Flammability	UL94 V-2
ROHS Compliant	Yes
UL Recognized	Yes
Releasable Closure	No
Length	36 x2 inch (Imperial)
	900 x2 mm. (Metric)
Width	13.00 mm. (Body) ±0.2 mm
	19.92 mm. (Head) ±0.2 mm
Thickness	≈ 1.78 mm. (Body) ± 10%
Operating Temperature	-40°F to +185°F (Fahrenheit)
	-40°C to +85°C (Celsius)
Minimum Tensile Strength	242.0 lbs (Imperial)
	110.0 Kgs (Metric)
Bundle Diameter	10 x2 mm. (Minimum)
	110.0 x2 mm. (Maximum)
Weight	≈ 34.23 grams (1 piece)
Features	Easy operation, Good insulation, Self-locking, Anti-corrosion and Resistant to breaking.
Warning	This product is not intended for any unlawful purposes.



Pictures of products and dimensions are approximate and subject to technical changes (with a tolerance of ± 5% or ±0.2 mm).